

onward<sup>®</sup>



Club Car<sup>®</sup>



# ONWARD<sup>®</sup>

Introducing the Onward from Club Car, a personal transportation vehicle that is crafted to fit your lifestyle. It's convenient, reliable, stylish and is the only vehicle of its kind with an unmatched collection of custom integrated accessories and options so you can make it your own.

This is the future of personal transportation...and it starts now!



Club Car<sup>®</sup>

A History of  
Innovation.  
A reputation  
for Quality.

Club Car is known for superbly engineered products that work hard to make everyday life better.

The six new Onward Models carry on that tradition by prioritizing the safety, comfort and satisfaction of drivers and passengers. It starts with what you can see, like standard LED headlights and side reflectors that enhance driver visibility. But the details you can't see matter too, because they reflect an unwavering commitment to safety over 60 years strong.



Pick your size. Make it your own.

---



**TWO-PASSENGER**  
Gas | Electric | Lithium



**FOUR-PASSENGER**  
Gas | Electric | Lithium  
Lifted | Non-Lifted



**SIX-PASSENGER**  
Gas | Electric  
Lifted | Non-Lifted





# Our Design. Your Details.



GENUINE PARTS  
& ACCESSORIES

Unlike after-market components, our extensive collection of Onward accessories was developed, built, and tested alongside the vehicle to ensure perfect fit and performance. From windshields to wheels, canopies to tires, and everything in between, there are hundreds of ways to personalize your Onward.

Ready to get started? Tailor one to your specifications with the online design tool at [clubcar.com/build](http://clubcar.com/build).

Additional overhead storage for added space or a wireless sound system that syncs with your mobile devices.



Premium seat choices, designed for maximum comfort, are available in two-tone or solid colors.



Deflect spray from tires with front and rear fender flares thoughtfully designed to complement the vehicle's lines.



Two distinct machined alloy wheel styles, Atlas and Mercury, add edgy style.



Pick clear or tinted windshields with gaskets to block wind and dampen noise.



## Roll with Confidence

Designed in partnership with Kenda™, exclusive Club Car® tires are made with premium compounds to improve durability and tread life while delivering a smooth, comfortable ride. Choose from three sizes for the Onward PTV; see a salesperson for details.



Mercury 10-inch and Atlas 14-inch

## Ride in Color

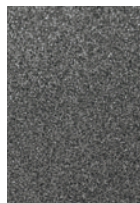
The new Onward® comes in a variety of metallic\* colors, each carefully applied to maintain a flawless appearance for miles:

\*Available colors and options subject to change. More Colors available at [clubcar.com](http://clubcar.com)

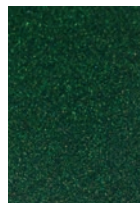
Metallic Tuxedo Black



Metallic Platinum



Metallic Jade Green



Metallic Pearl Blue



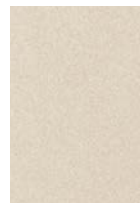
Metallic Candy Apple Red



Metallic Glacier White



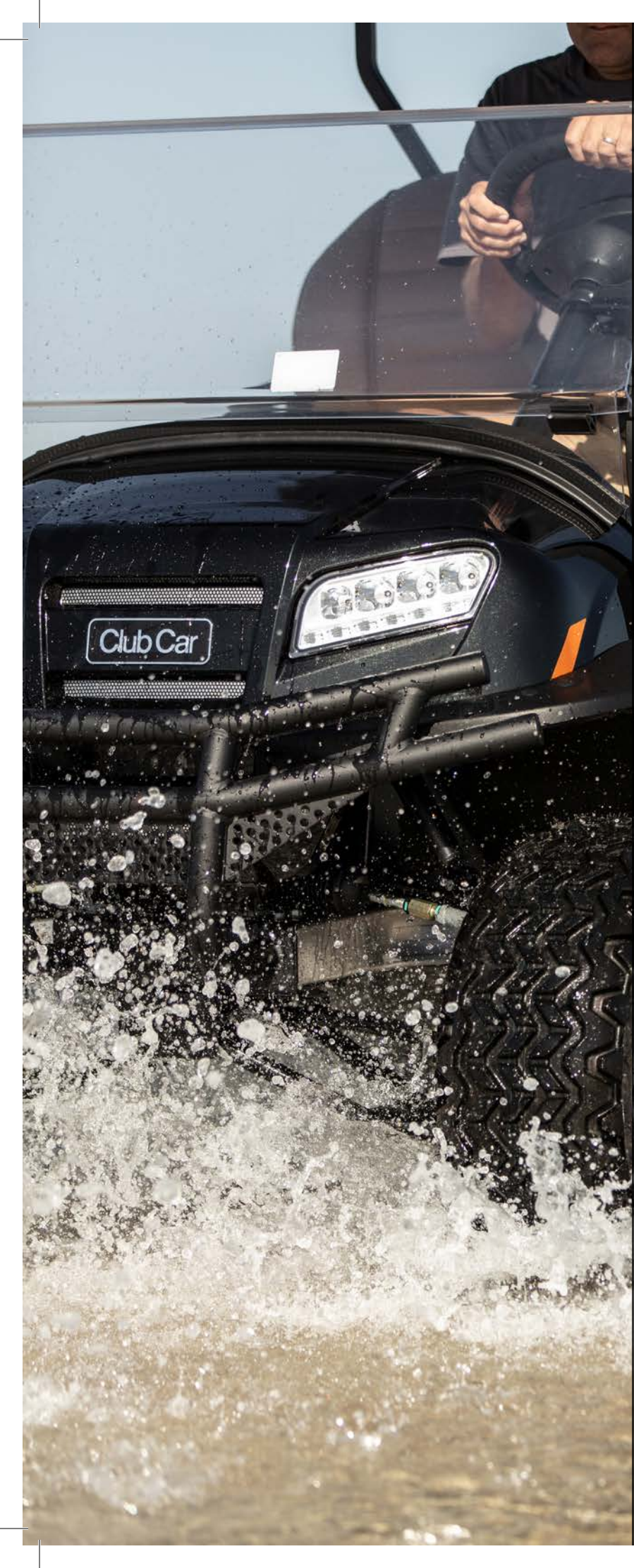
Metallic Beige



Metallic Ocean Teal







## Dynamic Stability & Predictable Handling

On select Onward® models, an exclusive stability bar under the axle minimizes lateral wheelbase movement for greater confidence during turns.

## Environmental Durability

As one of the only personal transportation vehicles constructed from an aluminum frame, the Onward is uniquely resistant to the elements.

Plus, our metal flake paint and UV-tested components are specially formulated to resist fading.

## Enhanced Visibility

When your family is on the road, it's crucial that your vehicle be seen by pedestrians and other traffic. That's why the Onward has front LED headlights that sweep the curb but won't blind passersby, turn signals you can spot from a 90-degree angle, and brake lights.

## Superior Comfort

Motion control components within the suspension system on select models absorb energy over uneven paths or pavement, creating a smoother, more comfortable ride.

**onward®**





# Crafted for Peace of Mind.

This 6 passenger Personal Transportation Vehicle was specifically engineered with your comfort and safety in mind. And, with the warranty, backing, and support you expect from Club Car, your family can focus on what really matters.



Front row under-seat storage tray with multiple compartments



Available in all Onward standard colors, options, upgrades and accessories



The extended body aesthetic parts have been designed for a fully integrated and sleek look

Long, one-piece canopy design that covers the rear facing passengers

Ergonomic grab handles for second row passengers and dual cup holders positioned for easy reach

Front row seat pod purposely engineered to provide ample leg room for second row passengers

Enhanced suspension system for improved handling and performance







The new high-powered motor and electronic controller improves hill-climbing speed, performance, and efficiency.



Six-year battery warranty – the longest battery warranty in the industry.



Three programmable drive modes to maximize your performance level. Choose between econ, normal, and sport modes at time of purchase.

# Crafted for Performance.

Take everything you already love about Onward and add our exclusive Lithium-Ion technology and you've got the best electric personal transportation vehicle in the industry.

Your car can be built to your specifications and preferences with completely customizable options including color, seats, wheels and even drive modes to maximize performance.



## Performance

This all-new, Lithium-Ion powered vehicle exceeds all expectations with increased hill-climbing capabilities and high-power acceleration. No other vehicle in the industry can compete with its powerful motor and broad range of programmable drive modes.

## Safe & Reliable

With a state-of-the-art battery management system, the battery pack is completely protected from the elements in a self-contained, fully coated steel, water-tight battery case. For added peace of mind, the Onward HP Li-Ion comes with a 6 year battery warranty.

## Maintenance Free

The Lithium-Ion battery is completely maintenance-free. Long gone are the days of watering and cleaning your batteries. No matter your plans, you can always expect consistent performance with the Onward HP Li-Ion.





Club Car vehicles and accessories are sold through Authorized Club Car Dealers.

To find a dealer near you, visit  
[ClubCarDealer.com](http://ClubCarDealer.com)



Ingersoll Rand (NYSE:IR) advances the quality of life by creating comfortable, sustainable and efficient environments. Our people and our family of brands—including Club Car®, Ingersoll Rand®, Thermo King® and Trane®—work together to enhance the quality and comfort of air in homes and buildings; transport and protect food and perishables; and increase industrial productivity and efficiency. We are a \$13 billion global business committed to a world of sustainable progress and enduring results.

