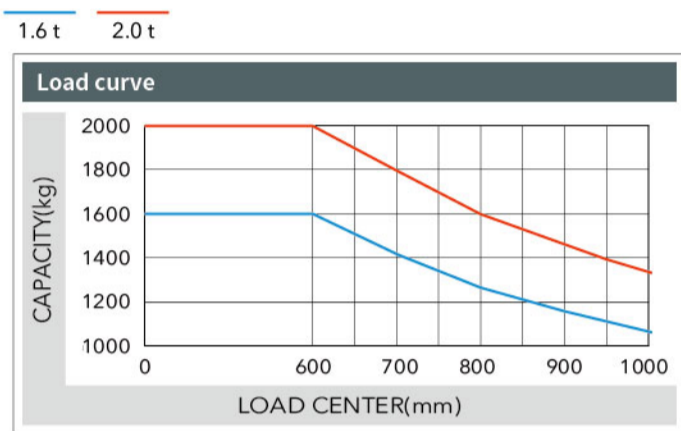
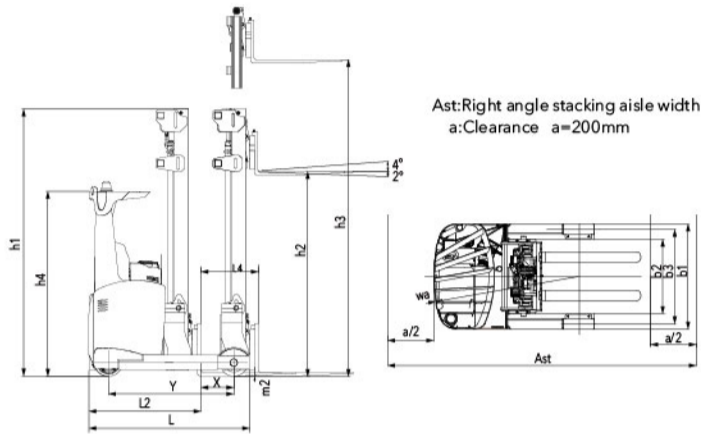


Mast model	Lifting height h3 (mm)				Height (mast lowered) h1 (mm)	Free lifting height (with backrest) (mm)	Service weight(kg)				Fork tilt angle (front/rear)/α/β
	Load capacity (load center 600mm)(kg)						Service weight(kg)				
	CQD16-GB2SL	CQD20-GB2SL	CQD16-GB2SL	CQD20-GB2SL			CQD16-GB2SL	CQD16-GB2SL	CQD20-GB2SL	CQD20-GB2SL	
ZSM460	4600	4600	1600	2000	2314	1280	3505	3675*	3564	3734*	2°/4°
ZSM480	4800	4800	1600	2000	2381	1340	3524	3694*	3583	3753*	2°/4°
ZSM540	5400	5400	1600	2000	2581	1540	3582	3752*	3641	3811*	2°/4°
ZSM570	5700	5700	1550	1900	2681	1640	3610	3789*	3669	3839*	2°/4°
ZSM630	6300	6300	1500	1900	2881	1840	3668	3838*	3727	3897*	2°/4°
ZSM675	6750	6750	1450	1800	2982	1940	3701	3871*	3760	3930*	2°/4°
ZSM700	7000	7000	1400	1700	3065	2030	3725	3895*	3784	3954*	2°/4°
ZSM715	7150	7150	1400	1700	3115	2080	3739	3909*	3798	3968*	2°/4°
ZSM750	7500	7500	1300	1700	3232	2190	3773	3943*	3832	4002*	2°/4°
ZSM800	8000	8000	1200	1500	3398	2360	3821	3991*	3880	4050*	2°/4°
ZSM850	8500	8500	1100	1300	3564	2530	3869	4039*	3928	4098*	2°/4°
ZSM900	9000		900		3730	2690	3916	4086*			2°/4°
ZSM950	9500		800		3898	2860	3965	4135*			2°/4°

Mast model	Lifting height h3 (mm)		Height (mast lowered) h1 (mm)	Service weight(kg)		Fork tilt angle (front/rear)/α/β
	Load capacity (load center 600mm)(kg)			Service weight(kg)		
	CQD16-GB2SL	CQD20-GB2SL		CQD16-GB2SL	CQD20-GB2SL	
M290	2900		2200	3276	3446*	2°/4°
M320	3200		2250	3295	3465*	2°/4°
M360	3600		2550	3324	3494*	2°/4°
M380	3800		2650	3338	3508*	2°/4°
M400	4000		2750	3353	3523*	2°/4°
M420	4200		2850	3366	3536*	2°/4°
M440	4400		2950	3379	3549*	2°/4°
M460	4600		3050	3435	3605*	2°/4°
M500	5000		3250	3463	3633*	2°/4°



**Note:** The vertical axis stands for load capacity and the horizontal axis stands for load center which is calculated from the front surface of the forks to the gravity of the standard load. The standard load means a cubic with 1000mm edge length. When mast is tilted forward, using non-standard forks or loading large goods, the load capacity will be reduced. The load capacity of standard mast at different load center can be known from this load chart.

**RENEWABLE ENERGY TECHNOLOGIES**

With the use of the excellent load-sensing steering system and AC controlling renewable energy technologies, the forklift is more energy-saving and the working hour of the battery is extended by 15%.

**15%**

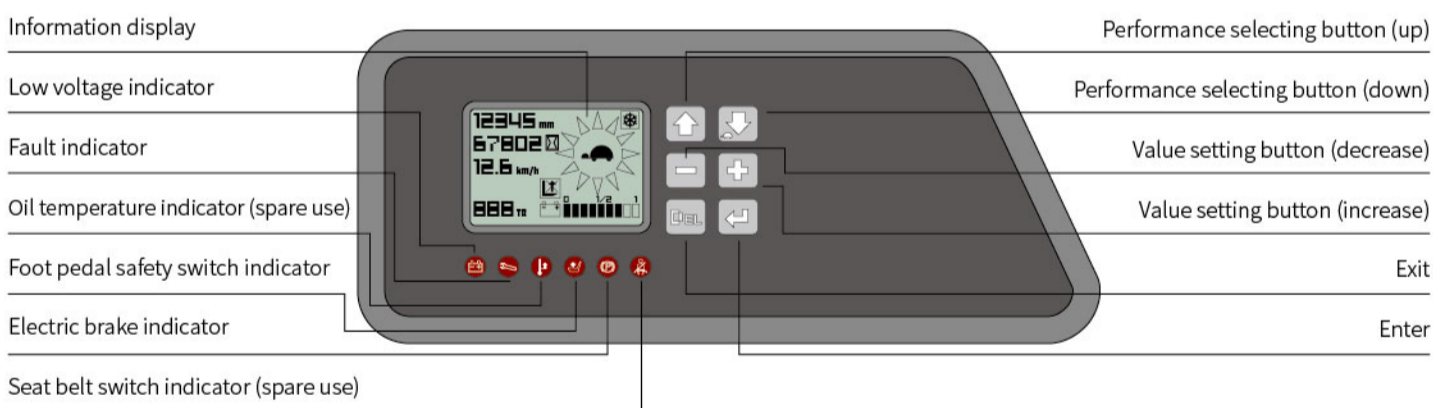
Manufacturer's Data and Design Characteristics				
Character				
1.01	Manufacturer	ANHUI HELI CO., LTD.		
1.02	Model	CQD16	CQD20	
1.03	Configuration number	GB2SL	GB2SL	
1.04	Load capacity	1600	2000	
1.05	load center distance	600	600	
1.06	Power mode	Battery	Battery	
1.07	Driving mode	Seated	Seated	
1.08	Wheel base	1450	1515	
Tyre				
2.01	Tyre type	Polyurethane	Polyurethane	
2.02	Wheels, number front/rear (x=driven wheels)	1x/2	1x/3	
2.03	Track width, rear	1157	1143	
2.04	Wheel size, rear	φ285x100	φ330x100	
2.05	Wheel size, front	φ343x114	φ343x114	
Size				
3.01	Lift height	h3	4600	4600
3.02	Free lift	h2	1280	1280
3.03	Mast height, lowered	h1	2314	2314
3.04	Fork size:thickness×width×length	s/e/l	40x122x1150	40x122x1150
3.05	Fork adjusting width	mm	244-724	244-724
3.06	Fork tilt angle (front/rear)	α/β	2°/4°	2°/4°
3.07	Fork sideshifting	mm	±75	±75
3.08	Truck body length (fork excluded)	L	1840	1940*
3.09	Length(the distance from the fork face to rear frame)	L2	1372	1472*
3.10	Truck body width	b1	1270	1270
3.11	Distance between support arms	b2	900	900
3.12	Reach distance	L4	555	620
3.13	Height of cab	h4	2215	2215
3.14	Ground clearance, below mast	m2	75	75
3.15	Turning radius	Wa	1689	1788*
3.16	Load distance, centre of support arm wheel to face of forks	X	313	383
3.17	Aislewidth with pallet.1200x1200	Ast	2960	3060*
3.18	Aislewidth with pallet.1000x1200 lengthways	Ast	2800	2900*
Performance				
4.01	Travelling speed: with/without load	km/h	11/12	10/11
4.02	Lifting speed: with/without load	m/s	0.34/0.53	0.29/0.45
4.03	Lowering speed: with/without load	m/s	0.5/0.5	0.5/0.5
4.04	Reach speed, with/without load	m/s	0.11/0.11	0.11/0.11
4.05	Maximum climbing ability, with/without load	%	10/15	10/15
Weight				
5.01	Total weight (with battery)	kg	3505	3675*
5.02	Axle load, fork outreached, without load, front/rear	kg	1670/1835	1760/1915*
5.03	Axle load, fork retracted, without load, front/rear	kg	2180/1325	2290/1295*
5.04	Axle load, fork outreached, with load, front/rear	kg	760/4345	785/4490*
5.05	Axle load, fork retracted, with load, front/rear	kg	1880/3225	1945/3340*
Battery				
6.01	Battery voltage/capacity Ks	V/Ah	48/500	48/600
6.02	Battery weight	kg	860	972
6.03	Battery box dimension	mm	1220x353x784	1220x352x784
Motor and controller				
7.01	Drive motor power (60 min)	kW	6	6
7.02	Lifting motor power (15%)	kW	11	11
7.03	Steering motor power (50%)	kW	0.4	0.4
7.04	Type of driving control		MOSFET/AC	MOSFET/AC
7.05	Type of lifting control		MOSFET/AC	MOSFET/AC
7.06	Type of Steering control		MOSFET/AC	MOSFET/AC
7.07			HELI special transmission box	HELI special transmission box
7.08	Service brake	Mpa	Electromagnetic brake	Electromagnetic brake
7.09	Hydraulic system working pressure		17.5	20

NOTE: \*Detailed information about battery, please contact our salesman or engineer.

**CHL**

Reliable special designed Instrument

The reliable special instrument gives a complete display of the vital information, like operation status, fault detection, etc. It ensures the operator predominate the vehicle status more intuitive and convenient.



Standard configuration	Optional
AC travelling motor	Front working light
AC lifting motor	Rearview mirror with view angle
AC steering motor	Safety belt
ZAPI travelling motor controller	Blue warning light
ZAPI lifting motor controller	HE'AN seat
ZAPI steering motor controller	USB
Electromagnetic brake	Three-stage full free lift mast (other lifting height)
DC/DC converter	fork with other length
Low noisy gear pump	Safety belt
Control valve ( four throw)	Blue warning light
4600mm three stage full free lift mast	HE'AN seat
Integral sideshifter	USB
Standard fork	
Backrest	
Polyurethane tyre	
LED meter	

**CHL**

**1.6-2.0t<sub>G2</sub>**

**ELECTRIC REACH TRUCK FOR COLD STORE (SIT-ON TYPE)**



Design:Print:Sales:Printing\_20201028

Manufacturer: **ANHUI HELI CO., LTD.**  
 NO.668 Fangxing Street, Economic Development Zone,  
 Hefei, P.R.China  
 TEL:86-551-63639458  
 FAX:86-551-63639966  
 WEBSITE:HTTP://WWW.CHLFORKLIFT.COM  
 E-MAIL:CHL@CHLFORKLIFT.COM

AUTHORIZED DEALER

\* Details of specifications and equipment are based on information available at the time of printing and may change without notice.

# 1.6-2.0t G2

## ELECTRIC REACH TRUCK FOR COLD STORE (SIT-ON TYPE)

### FEATURES OF THE COMPLETED TRUCK

#### Newly designed hydraulic system

- Newly designed hydraulic system with high working efficiency
- High power lifting motor
- MOSFET lifting speed governing electric controller
- New type low noisy gear pump
- Max. lifting speed without load 15% increased
- Max. lifting speed with load 25% increased

#### Three phase AC type motor technology

- Three phase AC type motor control on travelling, lifting and steering
- Good acceleration
- Fast and sensitive respond on travel direction shifting Free from maintenance motor without carbon brush having long service life and low maintenance cost
- Energy regenerating during deceleration extending operation hours
- Max. travelling speed without load 20% increased
- Max. travelling speed with load 27% increased

#### Optimized intelligent design

- ZAPI travelling motor controller
- ZAPI lifting motor controller
- ZAPI steering motor controller
- CAN bus technology
- Emergency power off of both main circuit and control circuit
- Parking brake on slope
- Operation sequence protection
- Travelling speed control
- Electric controller self protection
- Lifting height pre-selector (optional)

#### Advanced EPS electric powered steering

- EPS electric powered steering offering easy, flexible, high efficient and mute operation
- Steering motor controller
- Automatic centering function
- Real-time shifting between 180°steering mode and 360° steering mode
- Automatic limit on speed and accelerated speed when steering

#### Easy operated thumb switch

- To control hydraulic functions
- Clear operating units
- Proportional solenoid offering a stable and comfort lowering action



#### Sealed cab (optional)

- Tempered glass for cab
- The interior of the cab is packed by upholstery, prevent frostbite.
- Heater improves the temperature inside of cab.
- Electrical heating seat provides comfortable working environment for operator.
- USB
- Glass on top of the cab provides better visibility on the premise of ensuring safety
- Small window on one side of steering wheel meets ergonomics requirement.

#### Corrosion and rust prevention

- Corrosion and rust prevention painting is used on the completed truck.
- Stainless steel bolts are used on key parts.
- Chromate finish is adopted on pistons of front and rear lifting cylinders.
- Dacromet technology is adopted on the surfaces of chains.

#### Special oils for cold store

- Special low temperature lubrication grease is used for rollers.
- Low temperature transmission oil is used for transmission system.
- Hydraulic oil with low condensation point is used for hydraulic system.

#### Special parts for cold store

- Special drive tyres for cold store
- Special motors for cold store

#### HELL smart fleet management system (optional)

- Vehicle positioning
- Remote diagnosis
- Remote monitoring
- Maintenance reminder
- Battery management
- Statistical form
- Vehicle management
- Identification recognition (optional)
- Weight management (optional)
- Collision management (optional)

