

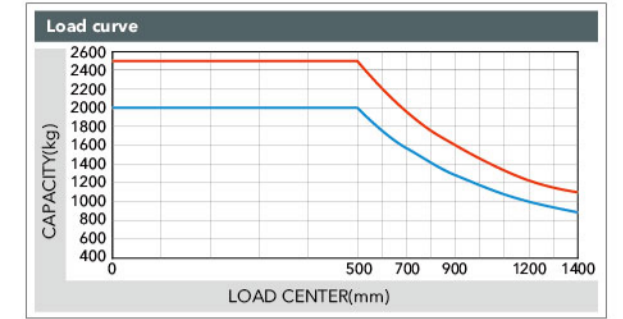
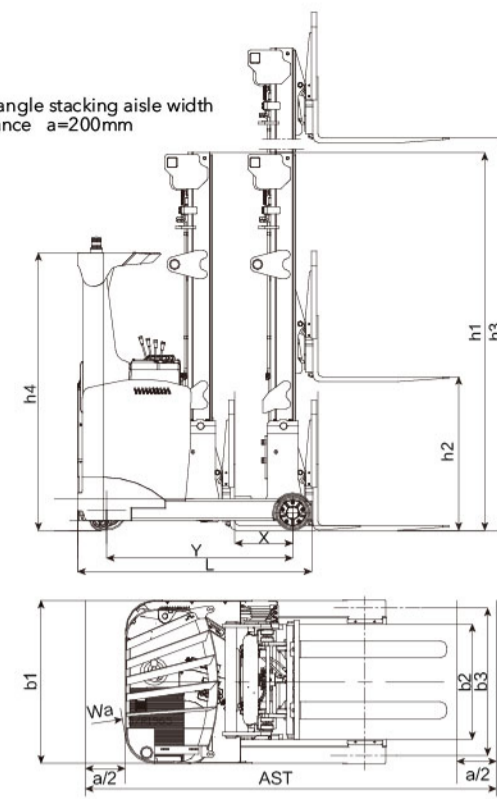


Manufacturer's Data and Design Characteristics

Character		ANHUI HELI CO., LTD.	
1.01	Manufacturer		
1.02	Model	CQD20	CQD25
1.03	Configuration number	GC2R	GC2R
1.04	Load capacity	Q kg	2000 2500
1.05	Load center distance	C mm	500
1.06	Power mode	Battery	
1.07	Driving mode	Stand-on	
1.08	Wheel base	Y mm	1515 1685
Tyre			
2.01	Tyre type	Polyurethane	
2.02	Wheel number, drive/caster/load (X=drive wheel)	1x/2/2	
2.03	Track Width,load	b3 mm	1078
2.04	Wheel size, load	mm	ø285x100
2.05	Wheel size, drive	mm	ø330x114
2.06	Wheel size, caster	mm	ø178x76
Size			
3.01	Lift height	h3 mm	3300 3300
3.02	Free lift	h2 mm	80 80
3.03	Mast height, lowered	h1 mm	2424 2424
3.04	Fork size, thickness/width/length	s/e/l mm	40x122x920 40x122x1070
3.05	Fork adjusting width	mm	244~722 244~722
3.06	Fork sideshifting	mm	±55 ±55
3.07	Truck body length(fork excluded)	L mm	1906 2076
3.08	Truck body width	b1 mm	1190 1190
3.09	Distance between support arms	b2 mm	846 846
3.10	Reach distance	l4 mm	675 845
3.11	Height of overhead guard	h4 mm	2250 2250
3.12	Ground clearance,below mast	m2 mm	83 83
3.13	Turning radius	Wa mm	1795 1965
3.14	Distance from fork front tipto center of load wheel	X mm	467 637
3.15	Aisle width with pallet1100Lx1100W,clearance 200	Ast mm	2835 2885
3.16	Aisle width with pallet1000Lx1100W,clearance 200	Ast mm	2760 2825
Performance			
4.01	Travelling speed,with/without load	km/h	10/11.5 10/11.5
4.02	Lifting speed,with/without load	m/s	0.3/0.45 0.27/0.45
4.03	Lowering speed,with/without load	m/s	0.5/0.45 0.5/0.45
4.04	Reach speed,with/without load	m/s	0.1/0.1 0.1/0.1
4.05	Maximum climbing ability,with/without load	%	10/15 10/15
Weight			
5.01	Total weight(with battery)	kg	3200 3250
Battery			
6.01	Battery voltage/capacity k5	V/Ah	48/420 48/450
6.02	Battery weight	kg	750 780
6.03	Battery box dimension	mm	1035x352x784 11035x352x784
Motor and controller			
7.01	Drive motor power	kw	5 5
7.02	Lifting motor power	kw	10 10
7.03	Steering motor power	kw	0.6 0.6
7.04	Type of driving control	MOSTET/AC	
7.05	Type of lifting control	MOSTET/AC	
7.06	Type of steering control	MOSTET/AC	
7.07	Transmission box	HELI special transmission box	
7.08	Service brake	Electrical	

NOTE: Detailed information about battery,please contact our salesmen or engineer.

AST:Right angle stacking aisle width
a:Clearance a=200mm



Note: The vertical axis stands for load capacity and the horizontal axis stands for load center which is calculated from the front surface of the forks to the gravity of the standard load. The standard load means a cubic with 1000mm edge length. When mast is tilted forward, using non-standard forks or loading large goods, the load capacity will be reduced. The load capacity of standard mast at different load center can be known from this load chart.

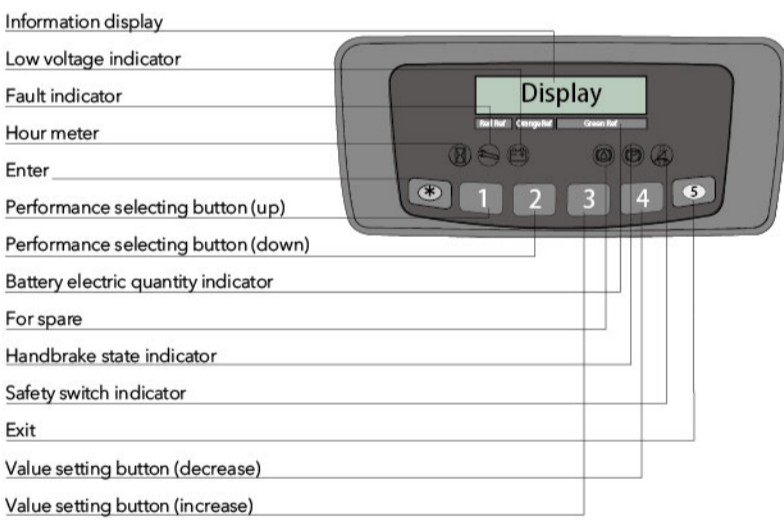
Configuration number	Configuration
GC2R	Manually operated valve
	Mechanical handle control hydraulic functions
	ZAPI travelling motor controller
	ZAPI lifting motor controller ZAPI steering motor controller

Mast model	h3		h2		h1		Load capacity (kg)		Forks tilt angle (front/rear) α/β
	Lifting height (mm)	Free lifting height (mm)	Mast height, lowered (mm)						
ZSM360	3600	3600	980	980	2005	2005	2000	2500	2°/4°
ZSM400	4000	4000	1110	1110	2138	2138	2000	2500	2°/4°
ZSM430	4300	4300	1210	1210	2238	2238	1900	2400	2°/4°
ZSM460	4600	4600	1310	1310	2338	2338	1900	2400	2°/4°
ZSM480	4800	4800	1380	1380	2405	2405	1800	2300	2°/4°
ZSM540	5400	5400	1580	1580	2605	2605	1500	2000	2°/4°
ZSM570	5700	5700	1680	1680	2705	2705	1450	1950	2°/4°
ZSM600	6000	6000	1780	1780	2805	2805	1400	1900	2°/4°
ZSM650	6500	6500	1947	1947	2972	2972	1300	1800	2°/4°
ZSM740	7400	7400	2247	2247	3272	3272	1000	1500	2°/4°

Mast model	h3		h2		h1		Load capacity (kg)		Forks tilt angle (front/rear) α/β
	Lifting height (mm)	Free lifting height (mm)	Mast height, lowered (mm)						
M250	2500	2500	80	80	2024	2024	2000	2500	2°/4°
M270	2700	2700	80	80	2124	2124	2000	2500	2°/4°
M300	3000	3000	80	80	2274	2274	2000	2500	2°/4°
M330	3300	3300	80	80	2424	2424	2000	2500	2°/4°
M360	3600	3600	80	80	2574	2574	2000	2500	2°/4°
M400	4000	4000	80	80	2774	2774	2000	2500	2°/4°
M430	4300	4300	80	80	2924	2924	1900	2400	2°/4°
M460	4600	4600	80	80	3074	3074	1900	2400	2°/4°
M500	5000	5000	80	80	3274	3274	1800	2300	2°/4°
M540	5400	5400	80	80	3474	3474	1500	2000	2°/4°



Reliable special designed instrument



The reliable special instrument gives a complete display of the vital information, like operation status, fault detection, etc. It ensures the operator predominate the vehicle status more intuitive and convenient.

HELI smart fleet management system (optional)

- Vehicle positioning
- Remote diagnosis
- Remote monitoring
- Maintenance reminder
- Battery management
- Statistical form
- Vehicle management
- Identification recognition (optional)
- Weight management (optional)
- Collision management (optional)



RENEWABLE ENERGY TECHNOLOGIES

With the use of AC controlling renewable energy technologies, the forklift is more energy-saving and the working hour of the battery is extended by 15%.



Manufacturer: ANHUI HELI CO., LTD.
NO.668 Fangxing Street,Economical Development Zone,
Hefei ,P.R.China
TEL:86-551-63639458
FAX:86-551-63639966
WEBSITE:HTTP://WWW.CHLFORKLIFT.COM
E-MAIL:CHL@CHLFORKLIFT.COM

AUTHORIZED DEALER

* Details of specifications and equipment are based on information available at the time of printing and may change without notice.



2-2.5 t

AC ELECTRIC REACH TRUCK
(STAND-ON TYPE)



2-2.5 t

AC ELECTRIC REACH TRUCK (STAND-ON TYPE)

» FEATURES OF THE COMPLETED TRUCK

Three phase AC type motor technology

- Three phase AC type motor control on travelling, lifting and steering
- Good acceleration
- Fast and sensitive respond on travel direction shifting
- Free from maintenance motor without carbon brush having long service life and low maintenance cost
- Energy regenerating during deceleration extending operation hours

Newly designed hydraulic system

- Newly designed hydraulic system with high working efficiency
- High power lifting motor
- MOSTET lifting speed governing electric controller
- New type low noisy gear pump, high efficiency and long life

Optimized intelligent design

- CAN bus technology
- Parking brake on slope
- Operation sequence protection
- Travelling speed control
- Lifting speed control
- Electric controller self protection
- Safety footswitch

Advanced EPS electric powered steering

- EPS electric power steering offering easy, flexible, high efficient and mute operation
- Steering motor controller
- Automatic centering function
- Automatic limit on speed and accelerated speed when steering

Easy operated thumb switch

- To control travelling functions
- Clear operating units

Six independent braking systems

- Automatic braking when accelerator lever is released
- Emergency brake activated by releasing foot switch
- Parking brake activated by pressing button on the panel
- Automatic hold-on brake
- Parking brake activated by hydraulic control lever
- Emergency isolator



Comfort cab

- The driver's body is fully protected within the truck contours.
- Padded waist, head and arm supports.
- Easy reach to important operation.

Overhead guard

- Overhead guard support for improved operator protection and enhanced visibility to the load.
- Fence on top of the overhead guard offering driver wide view.
- Beveled view angle design with front ring beam meeting humanized requirements.

Displayer

- High quality meter displaying important operating data.
- 180° steering angle position display.
- Display of battery power and fault code.
- Travelling mode selection.
- Lifting lock indication.
- Hour meter.
- Labor hour display.

Wide view mast

- Good view when loaded
- Integral sideshifter
- High residual load capacity at high lift height
- Buffering on lifting limit
- Buffering on mast moving forward and backward limit
- Fork tilt
- Lift height range: 2500-7400mm

Standard configuration

AC travelling motor
AC Lifting motor
AC steering motor
Electrical brake
DC/DC converter
Low noisy gear pump
Control valve(four throw)
3300mm two-stage mast
Integral sideshifter
Standard fork
Backrest

Polyurethane tyre
LED meter
Front working light
Vertical battery change
Warning light

Optional device

Three-stage full free lift mast
Two-stage mast(other lifting height)
Fork with other length
Fork extension
Monitoring system
Other battery
Battery charger
Alternative colour schemes
Battery on rollers for rapid side battery change

